

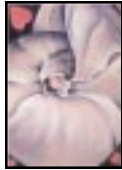


ace of hearts
ARC Architects
king
The Tsang Partnership
queen
Kober/Schlater Architects
jack
INTEGRUS Architecture
ten
Arai Jackson Architects
& Planners
nine
The Bumgardner Architects
eight
The Callison Partnership

seven
Martin Henry Kaplan,
Architects
six
Clayton R. Joyce
Associates
five
The BJSS Group
four
JKS Architects
three
Giffin Bolte Jurgens
two
Hamilton Architects

*The Playing Card
project played a pivotal
role in defining Notkin's
innovative approach
and immortalizing the
artistic expression
of our clients.*

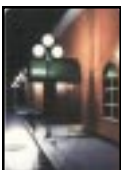
(National SMPS Award Winner)



ace of clubs
Edberg Christiansen
Architects
king
ARCHOS
queen
NBBJ - Seattle
jack
Moore Ruble Yudell
ten
SLR/Health Care Consultants
nine
CNJJ
eight
Schreiber & Lane Architects

seven
Retail Planning
Associates
six
Anderson Koch & Smith
five
Meng Associates
four
Stewart Associates
three
GEISE, Associates
in Architecture, Inc.
two
Lane Williams Architects

**50
YEARS**



Jokers
Sasaki Associates
NBBJ - San Francisco



ace of diamonds
Vaughan/Knudson
Architects
king
McLellan & Copenhagen
queen
Curtis Beattie & Associates
jack
Boyle-Wagoner Architects
ten
Streeter/Dermanis and
Associates
nine
Mandeville Berge Box
eight
The Callison Partnership

seven
Moore Andersson
six
Botes Nash Hall
Architects
five
G.R. Bartholick, Architect
& Planner
four
David Nordfors Architects
three
Bernie Baker Architects
two
Bassetti Norton Metter
Rekevics Architects



ace of spades
McGranahan Partnership
king
Loschky Marquardt
& Nesholm
queen
Mahlum & Nordfors
jack
Zimmer Gunsul Frasca
Partnership
ten
The Gjerding Company
nine
Ben G. Sharpe
Architectural Illustrator

eight
Armand R. Marion
Architects
seven
Hewitt Isley
six
Buffalo Design
five
Daly & Associates
four
Fulton Gale Architects
three
Cooper Architects
two
The Portico Group

